

The Net

“As he walked by the Sea of Galilee, he saw two brothers, Simon ...and Andrew, his brother, casting a net into the sea...And he said to them, “Follow me, and I will make you fishers of men.” (Matthew 4:18-19)

January 26, 2012

St. Andrew
Presbyterian Church

*Together
On a journey*

*Led by
Jesus Christ*

- * *Sharing our gifts*
- * *Reaching out*
- * *Changing lives*

COME AND SEE!

Presidential Primary Tuesday, January 31st

St. Andrew is a polling place for the 2012 Presidential Primaries! Polls will be open from 7:00am to 7:00pm. Volunteers needed to direct traffic, help with parking, and directing voters to the appropriate entrance of our building. This will also be a great missional opportunity. We are planning on offering coffee and cookies to those waiting in line. We anticipate the busiest time will be 7am-10am and 4pm-7pm. Volunteers will be needed for 1-2 hours shifts all day (7am-7pm). Please sign up in the rear of the sanctuary if you are able to help.



Health News

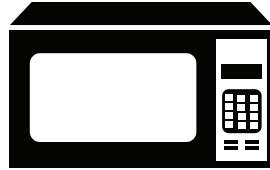
January is Cervical Health Awareness Month

Cervical cancer affects approximately 10,000 women in the United States each year. Cervical cancer is the second most common type of cancer for women worldwide, but because it develops over time, it is also one of the most preventable types of cancer.



Cervical cancer is **one** of the most preventable cancers today. If caught early, the 5-year survival rate is almost 100%. Regular Pap testing is the best method to protect against invasive cervical cancer. It is most important to remember that cervical cancer takes many years to develop. Regular Pap tests will help detect any precancerous or abnormal cells early enough so that cervical cancer can be prevented. Approximately 20 percent of diagnoses are made in women older than 65. For this reason, it is important for women to continue cervical cancer screening until at least the age of 70.

Hands On Meeting	2
Treatment for Children	2
Bloodmobile	3
Ministry Groups	3
Youth News	4
Hands On St. Andrew	4
Flower Dedications	5
Congregational Meeting	5
Financials	6
Calendar	6
Care Team	6
Contact	6



Microwave Needed

Needed: Used microwave for a single mother of two. If you have one to donate, please contact the church office. 813-907-3057



Hands On St. Andrew

Hands On St. Andrew will be having another planning meeting directly after service on **February 5th**. The meeting will be held in the PreK Classroom from 11:30am-12:15pm. All are welcome! We will be brainstorming projects, project promotion, and

involvement. No idea is too big or too small! Hope to see you all there.

Thank you for willingness to help with the Hands On Ministry program. If you have questions, please contact Rick Flahart, 978-3183.

Treatment for Children After Trauma



If your child is between the ages of 3 to 7 and has experienced a trauma, he or she may qualify to receive therapy free of charge through a research study.

The purpose of this research study is to develop and test a child trauma treatment that's easy to manage for parents and kids while being effective in helping your child.

Examples of traumas:

- Serious accidents, such as car wrecks
- Sexual abuse
- Physical abuse
- Domestic violence
- Seeing someone get hurt really badly
- Serious illness or very frightening medical experiences
- Being involved in a crime, such as a robbery
- Death of someone close
- Disasters

These types of traumatic events may cause children to have posttraumatic stress symptoms such as:

- Irritable, angry and has temper tantrums
- Difficulty sleeping and/or nightmares
- Stomach aches and/or headaches
- More aggressive (fighting, hitting, biting, shoving)
- Looks less happy and is less loving
- Plays less than before
- More jumpy and scared
- Gets very upset if something happens that reminds them of the trauma

Therapy will be provided free of charge. Treatment involves working with your child using a parent-child workbook with the support of a therapist, and/or coming to therapy visits in-office.

All children in this study will receive therapy from the Crisis Center of Tampa Bay, Inc.

Compensation will be provided for completing assessments.



This research is conducted under the direction of [Dr. Alison Salloum](#), University of South Florida, School of Social Work. IRB # (Pro0001885). Study title: Help, Hope, and Healing: Treatment for Children (ages 8 to 12) after Trauma, and IRB # (Pro0003544) Study title: Stepped Care for Young Children (ages 3 to 7) after Trauma.

For more information please call 813-264-9955.

facebook

Connect With St. Andy on Facebook!

Get connected with St. Andrew on Facebook!

Scroll down to the bottom of our website homepage at www.saintandy.com and click on our Facebook page link. Become a "fan" and stay connected to all the latest discussions, news and events of your church.

Share it with friends!

Need more information?

Contact April, our administrator,

april@saintandy.com.

Did you Know We Have Space For Rent?

You may not be aware, but St. Andrew has space available to rent!

We offer our large building and/or multi-purpose (small building) for special events, clubs, organizational meetings, etc.

If you know of someone who might be interested, please contact our office for leasing information.

We are especially interested in community groups and non-profit organizations.

January is National Blood Donor Month



The **Bloodmobile** will be here **Sunday, January 29** from **8:30 a.m. to noon**. Each donor will receive a long-sleeve T-shirt as a thanks for being a silent hero. You'll also have a chance to **WIN** a 2012 KIA Soul, courtesy of Friendly KIA. An ID is required to donate, minimum age 16 with parental consent, and must weigh at least 110 lbs. and be in general good health. You'll receive a free wellness check-up and cholesterol screening. To sign up or for more information, contact Judy Doop, 333-4202.

MINISTRY GROUPS

Prayer Team

Have you always wanted to pray more, but didn't know how and couldn't find the time? Then join us each Sunday as we give thanks to God, pray for ourselves, our congregation, our community, and the world. We will listen for God's voice to us. Prayer 'novices' are particularly welcome as we learn and grow spiritually together. Prayer Team will meet Sunday mornings from 9:15-9:45 in Movie Room of the small building. For more information, contact Prayer Team Leader, Marsha Joseph at mlj1230@tampabay.rr.com or 813-907-9102.



Sew In Faith

Our newest ministry group, "Sew in Faith", will meet every 2nd & 4th Thursday of the month from 7pm until 8:30pm in the small building. Anyone who enjoys sewing is invited to join them, however, no experience is necessary. They'll be making small quilts and gowns for the newborn intensive care unit at University Community Hospital. All are welcome to join them as they support our church mission to share our gifts and reach out to others. Questions? Contact Kim Van Trees, 813-991-7098 or turkeykim@mindspring.com

WIMODA Women's Group

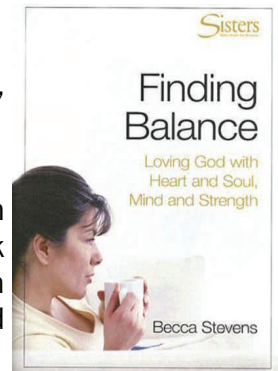
Meetings are held every 3rd Wednesday of the month, 7pm, in the Pre-K classroom of the main building.

All women are invited and encouraged to join!

This year they will study "Finding Balance: Loving God with Heart and Soul, Mind and Strength", a video/workbook based Bible study. The study explores issues of balance in women's lives - between devotion and duty, prayer and service, being and doing.

WIMODA (wives, mothers, daughters) meets each 3rd Wednesday of the month.

For more information, contact Louise Esker at eskerl@yahoo.com or 813-388-5406 or Susan Rine at susanrine@gmail.com or 352-588-4416.



YOUTH NEWS

UPCOMING MIDDLE SCHOOL EVENTS

January Missional Fellowship

The Youth Need Your Old Clothes!!

If you have any flannel or cotton clothing that you no longer need, please bring them in for the youth. We will be collecting soft fabrics to convert into pillows to donate to the St. Joseph's Children's Hospital cancer unit. Please place your donations in the collection box at the back of the sanctuary.



Youth group is ready to roll in the new year. Sunday, Jan 29th 5-7pm the youth will have dinner, fellowship, and begin working on the pillows. Lois Quinn and Kim Van Trees will bring sewing machines and expertise to assist us in creating the pillows.

For more information on youth activities please contact Heather Hartsell at heather@saintandy.com or 977-3496.



What Do I Place In the Offering Plate??

For those who use Egive, we provide EGIVE cards to place in the offering plate on Sunday. There is a stack of Egive cards on the Information Table at the back of the sanctuary. Just pick one up each Sunday. Placing Egive cards in the offering plate not only shows that you are donating to St. Andrew, but promotes the use of Egive to others.



“Care Coupons”

We've restocked and now “Care Coupons” packets are again available for \$5/each on the Welcome Table at the back of the sanctuary. Each packet contains five \$1 McDonald's Gift Certificates & a small devotional booklet. Simply keep a few in your car's glove compartment and hand one out the next time you see someone in need. Payment for the packets is on the honor system. Cash or checks payable to St. Andrew can be placed in the collection box on the Welcome Table. **Please make sure you mark your donation, whether check or cash, as “Care Coupons”!**



Payment for the packets is on the honor system. Cash or checks payable to St. Andrew can be placed in the collection box on the Welcome Table. **Please make sure you mark your donation, whether check or cash, as “Care Coupons”!**

Hands-On St. Andrew

St. Andrew is Throwing a Pajama Party!



Through the month of January, St. Andrew will be collecting NEW pajamas and NEW books for the “Pajama Program”, a non-profit organization that collects pajamas and books for needy children. Many of these youngsters have been abused or abandoned, and in many cases have never had a mom or dad to tuck them in at night. They are currently in need pajamas for teens; Adult sizes Small-XL for both male and female. Teen appropriate books are also needed. Contact Rick Flahart, 978-3183 for more information.

CHURCH NEWS

Congregational Annual Meeting February 19th!

Please plan on attending the congregational meeting on February 19th directly after worship service. The 2011 Annual Report will be presented and discussed. We will also take a vote on Dr. Shelor's Terms of Call.



Flower Dedications



To dedicate flowers for Sunday service to loved ones, please sign-up on the chart on the bulletin board in back of the sanctuary. Make sure you list your dedication exactly as you would like it printed in the bulletin. You can get the flowers from any florist you choose. Bring your flowers to church on the Sunday you have selected by 9:45am.

Have You Pledged?

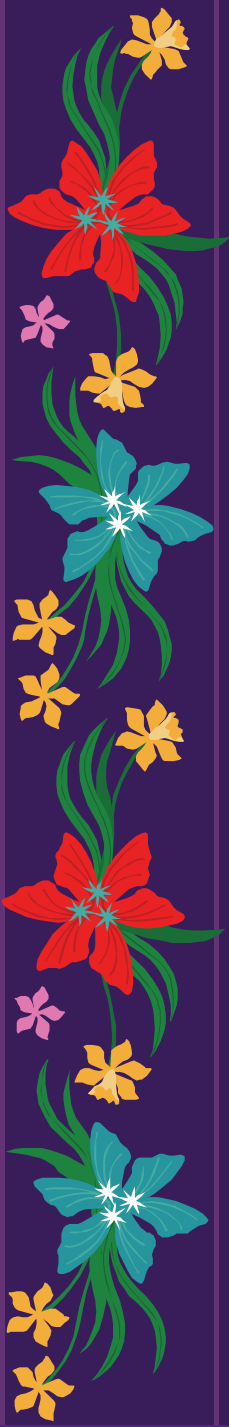
We are still taking pledges! "Estimate of Giving Cards" are available on the Welcome Table in the back of the sanctuary or by contacting the church office. Thanks to everyone who has given & pledged to continue the mission of St. Andrew!



Attention E-givers!



Please make sure you update your Egive information with our Egive provider if you have made any changes to your pledge for 2012. We do not have access to your personal information through Egive, so you must update your pledge information for the coming year. Thank you for your assistance and continued support of our mission here at St. Andrew. Please contact the church office with any additional questions or at april@saintandy.com.



St. Andrew Presbyterian Church

5340 Primrose Lake Circle
Tampa FL 33647
Office Hours: 9:00am-2:00pm

Phone: 813-907-3057
Fax: 813-907-3087
Email: april@saintandy.com



Become a fan of St. Andy on FACEBOOK! See our page at—
www.facebook.com/saintandrewpc

St. Andrew Year to Date Financial Statement

Because we believe in financial transparency, we have listed our year to date financial statement (general operating funds and building fund) in the table at the right.

Thank you for your generosity and for all the ways you are a part of what God is doing through St. Andrew! Lives are changed by God's presence every day because of your generosity. 'Every generous act of giving, with every perfect gift, is from above, coming down from the Father of lights.' (James 1:17)



Sign Up for our automated giving system on EGIVE:

Just click here: [EGIVE](#)

General Operating Funds As of 01/26/12

YTD Income: \$ 21,344
YTD Expenses: \$ 13,921
Difference \$ 7,423

Building Fund As of 01/26/11

Fund Balance \$ 93,474
Required Reserve \$ 32,500
Funds Available \$ 60,974

Mortgage Balance: \$1,025,945

Church Calendar - January/February 2012

<p>January 29 8:45am Adult Study 9:15am Prayer Team 10:00am Worship 5:00pm Why Church? 5:00pm Youth Fellowship</p>	<p>January 30 7:00pm Choir</p>	<p>January 31 </p>	February 1	February 2	February 3	February 4
<p>February 5 8:45am Adult Study 9:15am Prayer Team 10:00am Worship 11:30am Hands On 5:00pm Why Church?</p>	<p>February 6 7:00pm Choir</p>	<p>February 7 7:00pm Session Meeting</p>	February 8	<p>February 9 Boomer Cruise 7:00pm Sew In Faith</p>	February 10 Boomer Cruise	February 11 Boomer Cruise
<p>February 12 8:45am Adult Study 9:15am Prayer Team 10:00am Worship 5:00pm Why Church?</p>	<p>February 13 Boomer Cruise Returns 7:00pm Choir</p>	<p>February 14 Valentines Day </p>	<p>February 15 7:00pm WIMODA</p>	February 16	February 17	February 18

Congregational Care



Our Congregational Care Ministry's mission is to help extend Christ's care and compassion to those within the St. Andrew community. Members of this ministry team will provide visits, cards, and calls and coordinate meals and provision of other needs for those experiencing illness, grief or other crisis. Current team members are: • **Marilyn Ulrich, Team Leader** (994-9601 or mulrich1@tampabay.rr.com) • **Paula Hill** (977-2762 or Ynotpch@yahoo.com) • **Louise Esker** (388-5406 or eskerl@yahoo.com)

PRAYER REQUEST

For prayer requests, please email april@saintandy.com A complete list of prayer concerns can be found in the "Members Only" section of our website. Log in and look for "Prayer Requests". If you don't have a password, please contact the church

If you wish to be removed from our email distribution list, please email us at april@saintandy.com and put "delete from ENEWS" in the subject line.